

LEAN SYSTEM

EXECUTIVE DESKS
& MEETING TABLES



LEAN SYSTEM

Flexible program perfectly adaptable to management offices.

Light appearance and great stability. Designed to incorporate any technological requirement for a smart-office.

A wide range of sizes and finishes allow you to create an elegant custom space.

INDEX

05

EXECUTIVE DESKS

Configuration Options
Office Accessories

13

MEETING TABLES

Configuration Options
Office Accessories

19

OFFICE CHAIRS

Executive Chairs
Conference Chairs

24

FINISHES

Wood / Leather
Lacquered / Neolith / Fenix



EXECUTIVE DESK

LEAN SYSTEM



Bookcase with drawers and led lights. Finished in lacquered wood in *Beige* tone.

Executive desk with Drawer unit on wheels. Metal base in gloss chrome and Desktop in *Tierra* leather (work area) and lacquered wood in *Beige* tone.
Executive chair 6430 and **Visitor chair** 6432. Upholstered in *Tierra* leather.

Meeting table. Metal base in gloss chrome and Desktop in lacquered wood in *Beige* tone.
Meeting chair 6432. Upholstered in *Tierra* leather.



Front Panel for executive desk in lacquered wood in *Beige* tone.

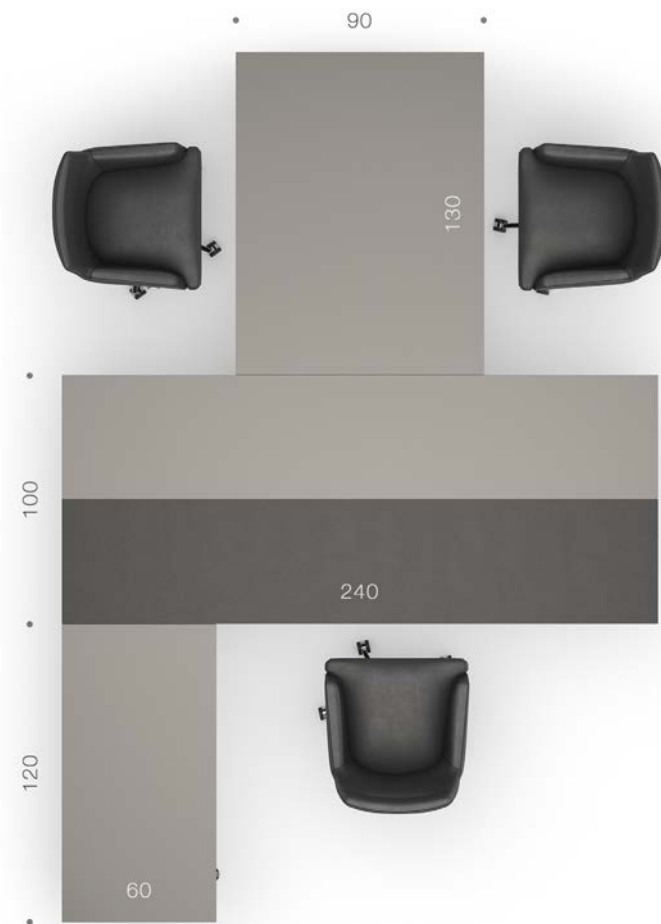


Drawer unit on wheels. *Canaletto* wood and lacquered wood in *Lead* tone.



Executive desk 240 + Briefing 130 + Low Cabinet 205. Metal base in gloss chrome, Desktop in Fenix Beige Arizona and Storage in lacquered wood in *Lead* tone.

Executive chair 6720 and Visitor chair 6721. Upholstered in *Toffe* leather.

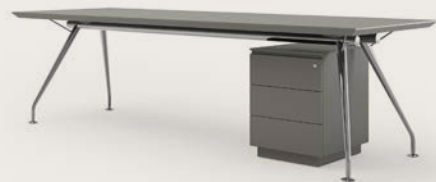


Executive desk 240 + Briefing 130 + High Wing 120.
Desktop in *Ceniza* leather and lacquered wood in *Silver* tone.

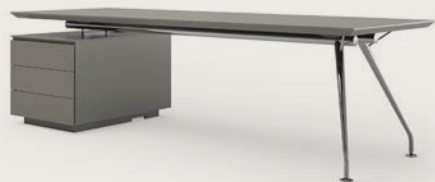


Low Cabinet 205 for executive desk with drawers and doors in lacquered wood in *Beige* tone.

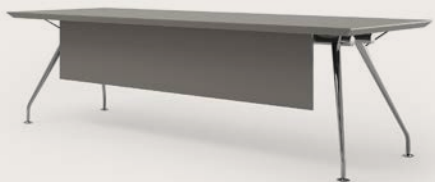
CONFIGURATION OPTIONS



Executive desk **180** x 100 with **Drawer unit** on wheels
210
240



Executive desk **180** x 100 with **Drawers**
210
240



Executive desk **180** x 100 with **Front Panel**
210
240



Executive desk **210** x 100 with **Low Cabinet** 205 (drawers / doors)
240



High Wing 100 x 60



Briefing 130 x 90

OFFICE ACCESSORIES

connections solutions



Cable Management for executive desk.



Retractable Connections for executive desk.

OFFICE ACCESSORIES

sockets and wireless solutions



Socket with 2 USB, in electrical tray.



Socket with 1 schuko + 2 USB, in electrical box.



Wireless charger.

A photograph of a modern meeting room with a long, dark wooden table and several black office chairs on wheels. The room has large windows in the background. Overlaid on the image is a complex geometric diagram consisting of several intersecting circles and lines, resembling a Venn diagram or a network diagram. The diagram is rendered in a light, sketchy style.

MEETING TABLES

LEAN SYSTEM



Meeting table. Metal base in gloss chrome and Desktop in Smoked wood.
Executive chair 6730 and **Meeting chair** 6731. Upholstered in *Panna* leather.

Cabinet. Smoked wood and lacquered wood in *Lead* tone.



Meeting table 150. Metal base in gloss chrome and Desktop in lacquered wood in *Silver* tone.
Meeting chair 6432. Upholstered in *Black* leather.



Meeting table 240. Metal base in black painted and Desktop in Neolith *Nero Marquina*.



Meeting table. Metal base in gloss chrome and Desktop in lacquered wood in *Silver* tone.
Sofa 220. Upholstered in *Remix* and metal legs.

Team working table. Metal base in gloss chrome and Desktop in lacquered wood in *Silver* tone.
Executive chair 6730. Upholstered in *Cuoio* leather.

Meeting table. Metal base in gloss chrome and Desktop in *Walnut* wood.
Meeting chair 6731. Upholstered in *Panna* leather.

CONFIGURATION OPTIONS



Meeting table **120x120**



Meeting table **150x150**



Meeting table **240x120**



Meeting table **320x120**



Meeting table **400x120**



Meeting table **480x120**

OFFICE ACCESSORIES

cable management solution



Cable Management for meeting table.



OFFICE CHAIRS

LEAN SYSTEM

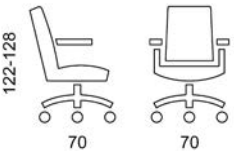
Executive chair 6430. Upholstered in *Tierra* leather.



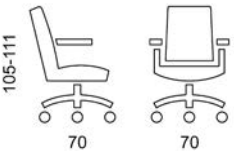
Visitor chair 6431.
Upholstered in *Tierra* leather.



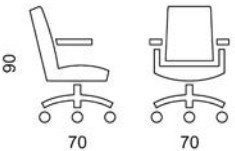
Visitor chair 6432.
Upholstered in *Tierra* leather.



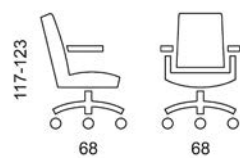
EXECUTIVE CHAIR 6430



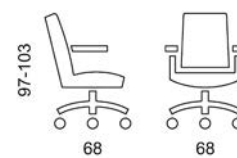
VISITOR CHAIR 6431



VISITOR CHAIR 6432

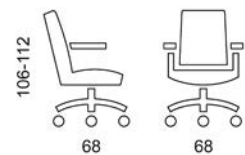


Executive chair 6720.
Upholstered in *Ceniza* leather.

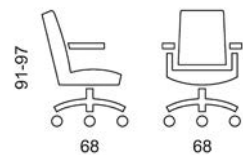


Visitor chairs 6721.
Upholstered in *Granate* and *Cuoio* leather.

Visitor chair 6731. Upholstered in *Chocolate* leather.



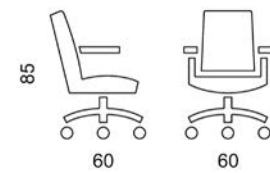
EXECUTIVE CHAIR 6730



VISITOR CHAIR 6731



Executive chair 6730. Upholstered in *Cuoio* leather.



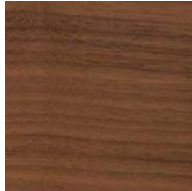
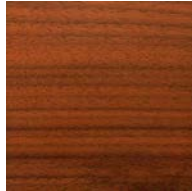

Visitor chair 6740. Upholstered in *Tierra* leather.



FINISHES

LEAN SYSTEM

WOOD

C63 OAK	C65 WALNUT	C30 CANALETTO	C31 PALISSANDRO
			
C64 EBONY	C66 WENGUE	C36 SMOKED	C99 DARK WALNUT
			

LEATHER

PANNA	BEIGE	TOFFE	PLATA
			
CUOIO	TIERRA	GRANATE	CHOCOLATE
			
CENIZA	ROSSO	AZURRO	NERO
			




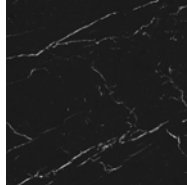


Metal legs in gloss chrome

LACQUERED

SILVER	BEIGE	CUOIO	GRANATE
			
BARRO	LEAD	BROWN	BLACK
			

NEOLITH

CALACATTA	ABU DHABI	BARRO	NERO MARQUINA
			

FENIX®

BIANCO KOS	BEIGE ARIZONA	GRIGIO BROMO	NERO INGO
			



Metal legs painted in black color

